

frame and pane

for violin and computer

Ash Stemke

For use with the accompanying Max/MSP patch.
If desired, the violin may be amplified and/or have light reverb added.
It is recommended that the violinist have the laptop next to them while playing
so that they can easily see the clock in the patcher window.

This improvisatory exploration for solo violin and computer is best performed in a cold, dark space.
It seeks to portray the experience of looking out a window during a wintertime snowstorm.
The computer, too, "improvises" its part to that, like the weather, no two listenings will ever be the same.

Performance Time: 7'

Directions:

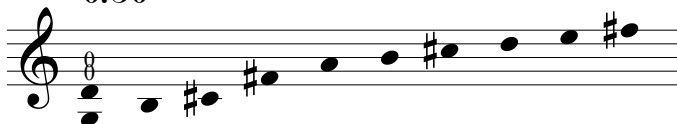
- 1) Turn on the audio and start the clock in the patch.
- 2) Follow along with the elapsed time displaying in the patcher window.
- 3) Improvise music using the collections of pitches notated below,
moving from collection to collection as the indicated times occur on the clock.
- 4) The violinist is encouraged to interact with the computer's improvisations, perhaps by
echoing musical materials, adjusting dynamic levels, creating particular harmonies, etc.
- 5) After 6:30, wait until the wind has faded out and conclude your improvisation,
ending with the pitch notated in the final bar.

0:00

with mute (or practice mute) throughout



0:30



1:30 (chimes begin)

